



Smiths HI-SCAN Series DV Operator Training Class

The Smiths HI-SCAN Series DV Operator Training Class teaches proper and effective use of the HI-SCAN product line. This course teaches the student how to use the machine's controls, image processing features, and advanced options. The Dual View simulator provides two perspectives for analyzing X-ray images, which mirrors the actual system setup and prepares students for an operational setting.

Key Features

- Individualized, self-paced instruction
- Standardized instruction
- Customized remediation and testing
- Secure records management system
- Detailed training reports
- Practical exercises

Key Benefits

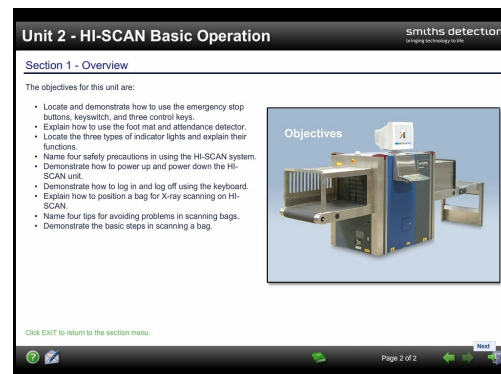
- Cost Effective - Safe and cost effective way to simulate use of the system.
- Results Oriented - Custom simulation sessions focus on student needs to increase performance.
- Automated Remediation - Custom remedial training based on test performance.
- Efficient - Use the training anytime, anyplace and at the student's own pace.
- Reliable - Standardized training and accurate training data.
- Flexible - Modify the testing and images to meet local requirements.

Course Topics

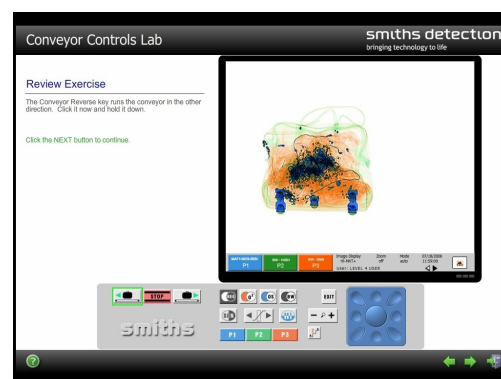
HI-SCAN Basic Operation – Teaches the student about the power and navigation controls that make up the machine. The student will learn about the safety precautions and must demonstrate understanding of the basic scanning steps and procedures.

Viewing Bag Images – Teaches how to use the image processing and zoom features to interpret X-ray images. This includes B&W, HI-MAT, O2, OS, SEN, VARI, HI, NEG, X-PLORE, and Priority keys (P1, P2, and P3).

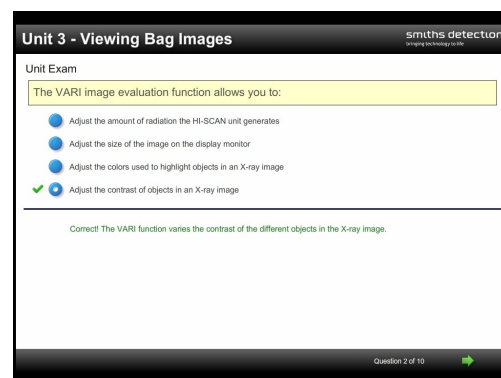
HI-SCAN Advanced Options – Teaches the student how to use the advanced image processing features (X-ACT, HI-SPOT, and HDA), the Image Store System (IMS), and how to respond to Threat Image Projection (TIP) images.



Operator Course Screen



Lab Exercise Screen



Unit Exam



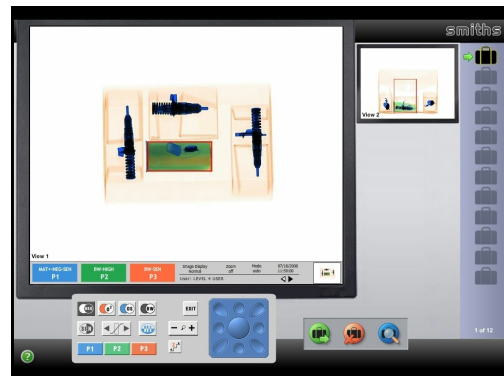
Smiths HI-SCAN Series DV Operator Training Class

Simulation

X-ray Interpretation Practice – Each student can practice their X-ray interpretation skills using an on-screen simulation of the system. The X-ray image library in the simulation contains both innocent and threat items. The industry specific image library will expose the student to a variety of threat items. The student will improve their skills by advancing through three levels of difficulty based on image complexity and orientation of the threat.

As each student works through practice sessions, a sophisticated algorithm monitors and tracks actions and decisions made for each image. Upon completion of a practice session, the algorithm determines if the student had difficulty correctly responding to any X-ray images. Based on the student's performance, subsequent practice sessions are tailored to meet the specific training needs of the student. This leads to more efficient and effective training, which results in higher detection rates and lower false alarm rates.

Ongoing X-ray Interpretation Training – The X-ray library contains a large number of threat items. The key to high hit rates and low false alarms rates is to have the skills to effectively recognize real threats. To do this, each student must develop knowledge of what a wide variety of threats look like under X-ray. The more different types of threats a student sees during training, the better prepared he will be to identify these threats in an operational setting. Trainers can also tailor training sessions to focus on specific threats of concern for their organization. The large image library of threats and the adaptive algorithm provide an effective way to continuously increase the detection skills of each student.



Simulation Course Screen

Courseware Specifications

Applications:

Initial, Recurrent

Delivery Options:

CBT, ILT, WBT

Estimated Seat Time:

Operator Course: 2.0 - 2.5 Hours
Simulator Course: 2 Hours*

Image Libraries:

Cargo, CBS

Languages:

Chinese - Simplified,
Chinese - Traditional, English,
French, French Canadian,
Indonesian, Japanese, Korean,
Malay, Portuguese, Spanish,
Tagalog, Thai, Vietnamese

Note: Courseware availability is based upon selection from the above specifications.

* Ongoing image interpretation practice is highly recommended to ensure screener proficiency.

Innovative Solutions. Superior Training. Accelerated Performance.

www.safe-passage.com

info@safe-passage.com

Corporate Headquarters

333 Metro Park
Rochester, New York 14623
UNITED STATES
Tel: +1 585 292 4910
Fax: +1 585 292 4911

ATS - Aviation Training & Services

Luiz Faccini, 416 - 2º floor -
Guarulhos - SP - Brazil
07110-000
Tel: +55 11 2229-8938
Cel: +55 11 96631-6965

